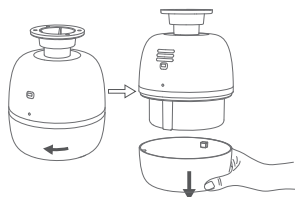


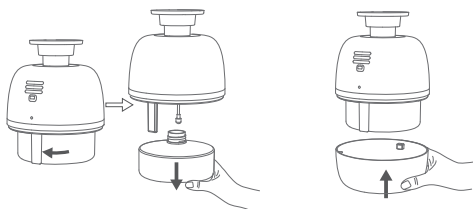
Please read carefully before use and keep it properly.

We supply warranty within 12 months after purchase date for all qualified machines.

◇ Operation



①The bottom cover of the device is magnetically fixed: hold the bottom cover of the lower half of the body, rotate it 30° clockwise/counterclockwise, and then gently lift it vertically downwards.



②Remove the essential oil bottle in the direction of the arrow (counterclockwise), refill the essential oil and turn it clockwise to put it back.

③Put back the bottom cover: Rotate the APPropriate angle to let the bottom cover automatically attach to the diffuser.

④Installation:



Ceiling



Wall-mounted



Slide rail

◇ Bluetooth, oil level light



Bluetooth & oil level light

When Bluetooth is connecting or there is a setting update on the APP, the blue light flashes twice and the device "beep" rings two times; Green, yellow, and red are oil level light, indicating the current essential oil level, as shown in the table below:

Essential Oil Level	50~100%	20~50%	0<20%
Indicator Light	Green	Yellow	Red(flash)

When the air pump stops, the essential oil level light is always on (the red light flashes slowly when the level of essential oil is low); When the air pump is working, the Bluetooth indicator and the corresponding color essential oil level light flash alternately.

◇ Bluetooth Setting Steps

1 APP download ways:

Scan the QR code to download the APP, or search for "Scent Tech" in the APP Store or Google Play.

Install Scent Tech on your phone and allow the APP gets the permission to use your phone. Click the Bluetooth icon to enter the device management page:

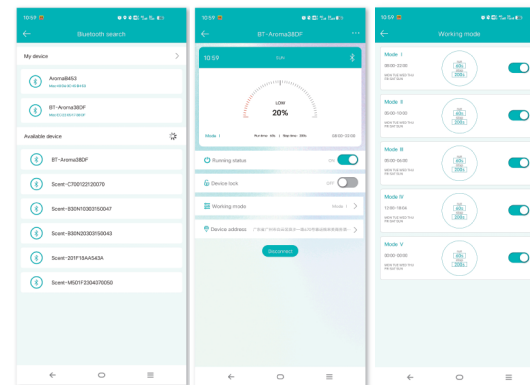


1)My Devices: The connected devices are displayed. The "My Device" column is a historical paired device. Click "My Device" to enter the device work interface for device management.

2)Available devices: When there are other available devices nearby, their device names will be displayed, click the corresponding device name to connect the device.

2 APP Home

① Device status bar: Display the local time and current working mode details automatically read by the system. Clicking "Disconnect" will cancel the connection of the currently matched device and exit the current device management interface.



- ②Rename: You can customize the device name.
- ③Working state: One click to turn on or off the working state of the device.
- ④Working mode: After connecting to Bluetooth, the five working levels of the device can be set through the APP, including working hours and week combinations.

◇ Equipment maintenance

If the equipment is not used for a long time, 95% industrial alcohol should be added into the refined oil bottle to clean the nozzle and other parts inside the equipment.

Tip: Maintain the equipment with 95% industrial alcohol at least every 1-2 months.

Specific operation: add 95% industrial alcohol into the empty bottle, turn on the equipment and run for 10-15 minutes after , then turn off the equipment and pour the alcohol, then screw back the bottle to machine.

◇ Packing

Scent diffuser x1, bottle x1, power adapter x1, atomization core x1, hanging plate x1, sheet metal fixed bracket (optional) x1, 380V rail box (optional) x1, user manual x1, certificate x1, screws x 4, screw plugs x 4.

◇ Product parameters

• Size: 140x140x174mm	• Weight: 0.65kg
• Voltage: DC 12V	• Capacity: 350ml
• Power: 8W	• Coverage: 300-500m³

◇ Warranty

1.The Warranty is suitable for new machine but not resell or second hand products.

2.Within 12 months after purchase date, Warranty is offered for all qualified machines. During warranty,we will offer repair services and the free parts but not include essential oil.

3.The warranty card & purchase Invoice are needed if after service required. Please contact with us within warranty if any problems.

4.The following is not for free warranty service:

- ①Damage & problems caused by Accidents & Fire.
- ②Not use properly and wrong operation.
- ③If repaired by unprofessional person and make some parts damaged.
- ④Damaged during transportation.
- ⑤Without our warranty card.
- ⑥Without proper cleaning for a long time
- ⑦The machine work time out.
- ⑧Machines & Parts not from us.
- ⑨Machines not gotten from official channels.
- ⑩Send the machines back without permit from manufacturer.

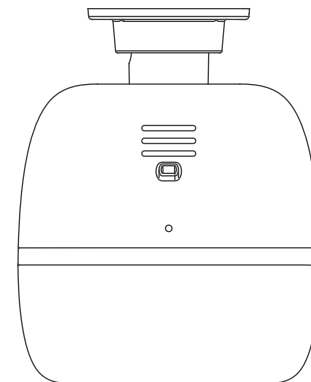
◇ Notice

- 1.Please carefully read the Instruction before installation, and keep the User manual to check if need at anytime
- 2.Please make sure the machine upright ,no leaking and no down; or may damage the device and parts
- 3.Please do not use the broken power wire and make sure the power supply is suitable for the machine, or may cause fire .
- 4.Please do not open the machine by yourself, If any problems, please contact us promptly !

SMART SCENT DIFFUSER



USER MANUAL



Please read the manual carefully and keep it properly before use

封底

封面